

INNOVATIVE MULTIPLEX MOLECULAR DIAGNOSTICS TESTING SOLUTIONS

EXCELLENT PERFORMANCE OF MULTIPLEX PCR TESTS FOR ACCURATE DIAGNOSIS & TRUE SCREENING

MOLgen

CE-IVD

MDx Syndromic Panels



MOLgen MDx Syndromic Panels, the next frontier diagnosing that detects causes of disease by targeting a range of pathogens associated with specific syndromes.

These advancements in diagnostic technology have the potential for early intervention and personalized cases.

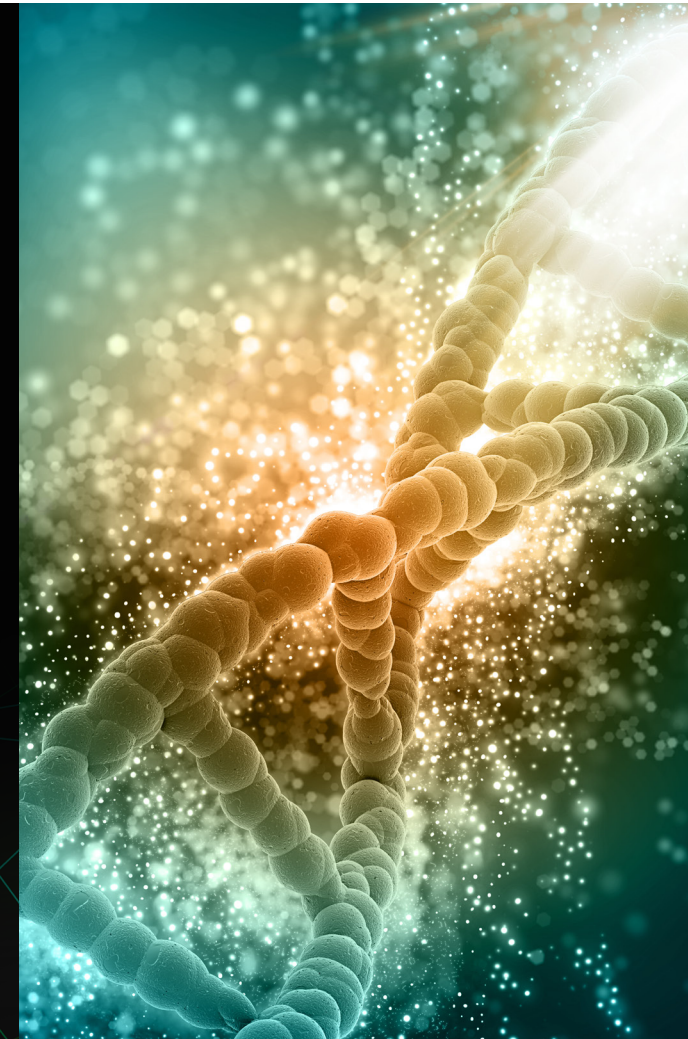
MOLgen syndromic panel kits are CE marked.

Molgen Syndromic Panels offer:

- Superior accuracy over traditional approaches
- Potential for improved early intervention
- Broad coverage pathogen detection
- Simplified workflow, use and often cost.
- Better patient accuracy ,one sample, one test, multiple results in one report
- Reporting Software

Flexible qPCR format

- For a various type of instruments
- Extraction free STI, Respiratory Panel, Carbapenem Resistance.



MOLgen MDx Syndromic Panels offers wide coverage of Pathogen detection in the diagnosis of many infectious clinical syndromes.

Syndromic Panels rapidly identify bacteria, viruses, fungi, and parasites in a single test with high sensitivity and specificity, and allow accurate and rapid diagnosis.



BLOOD STREAM INFECTIONS - SEPSIS



MENINGITIS / ENCEPHALITIS



ORTHOPEDIC - BONE & JOINT INFECTIONS



GASTROENTERITIS



RESPIRATORY TRACT INFECTIONS



TUBERCULOSIS & DRUG RESISTANCE



ANTIBACTERIAL RESISTANCE



TROPICAL FEVER & RASH



SEXUALLY TRANSMITTED INFECTIONS



HPV SCREENING & GENOTYPING



URINARY TRACT INFECTIONS (UTI)



CANDIDIASIS



EXTRACTION KITS

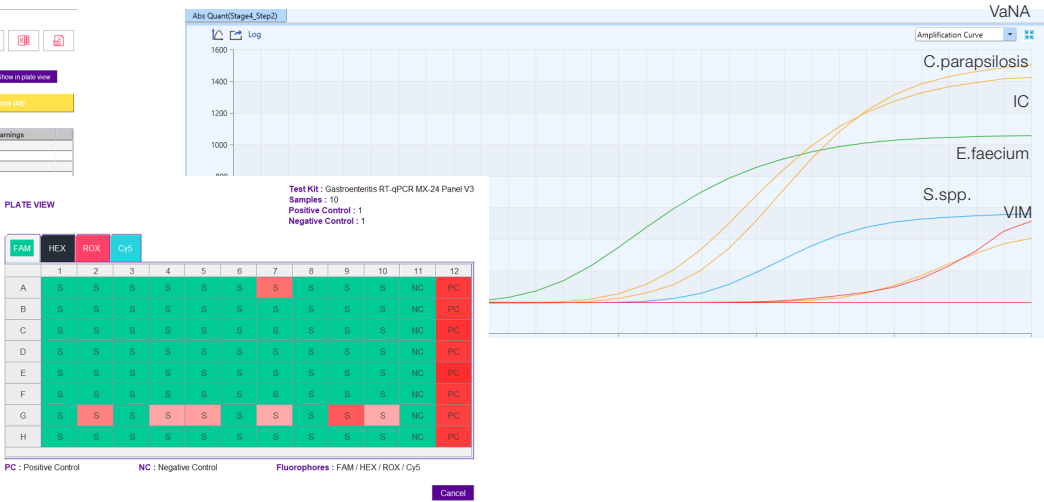
TECHNICAL FEATURES

- Interface for multiple-pathogen testing
- Interlocked with LIS
- Endogenous IC (RNase P)
- Fast PCR protocol < 1 hour
- Interpretation Software

Compatible Real-Time instruments:
MDXlab, Amplilab, CFX96, MIC., and more

Test Kit : Gastroenteris RT-qPCR MX-24 Panel V3
File : 05_10_2023_OIS PANEL1_RUN1.pcd
Date : 10 Jan 2024 15:14:26
User : Adm
Version : 6.0.2

Well	Sample	Target	Ct	Result	Warnings
✓ B1	19747233460	Enteropathogenic E. coli	35.22	High Positive	
✓ B2	19747233750	Enteropathogenic E. coli	20.01	Positive	
✓ E3	19747332234	Campylobacter spp.	29.39	Low Positive	
✓ F3	19747332234	Enteropathogenic E. coli	24.16	Positive	
✓ D4	19747299208	Rotavirus	24.62	Positive	
✓ G4	19747299208	Enteropathogenic E. coli	26.35	Low Positive	
✓ G6	19747211840	Enteropathogenic E. coli	24.42	Positive	
✓ D6	19747365332	Rotavirus	14.04	High Positive	
✓ A7	19747342498	Sapovirus	17.58	Positive	
✓ F7	19747342498	Shiga toxin producing E.	22.36	Positive	
✓ G7	19747342498	Enteropathogenic E. coli	27.16	Low Positive	
✓ B8	19747346885	Enterobacteriaceae	5.14	High Positive	
✓ B9	19747326893	Campylobacter spp.	22.17	Positive	
✓ B9	19747326893	Enteropathogenic E. coli	13.4	High Positive	
✓ E10	19747331705	Campylobacter spp.	21.11	Positive	
✓ G10	19747331705	Enteropathogenic E. coli	27.65	Low Positive	





SEPSIS qPCR MX-30T PANEL

Code	30 Targets	Specimens type	Format	Package - tests per kit	
BS-SE-MX30T-25 BS-SE-MX30T-100	<p>Gram+ Bacteria:</p> <ul style="list-style-type: none"> ■ Staphylococcus aureus ■ Staphylococcus spp. ■ Enterococcus faecium ■ Enterococcus faecalis ■ Streptococcus pneumoniae ■ Streptococcus spp. ■ Listeria monocytogenes <p>Fungi:</p> <ul style="list-style-type: none"> ■ Candida glabrata ■ Candida tropicalis ■ Candida krusei ■ Candida albicans ■ Candida parapsilosis <p>Vancomycin resistance:</p> <ul style="list-style-type: none"> ■ VanA ■ VanB 	<p>Gram- Bacteria:</p> <ul style="list-style-type: none"> ■ Pseudomonas aeruginosa ■ Klebsiella pneumoniae ■ Acinetobacter baumannii ■ Haemophilus influenzae ■ Klebsiella oxytoca ■ Pseudomonas spp. ■ Enterobacteriaceae ■ Stenotrophomonas maltophilia ■ Escherichia coli ■ Neisseria meningitidis <p>Carbapenem resistance:</p> <ul style="list-style-type: none"> ■ OXA 48 ■ KPC ■ NDM ■ VIM ■ IMP <p>Methicillin Resistance:</p> <ul style="list-style-type: none"> ■ mecA+C 	<ul style="list-style-type: none"> ■ Whole blood ■ Positive blood culture 	Well strip or Tube	25 / 100

Sepsis qPCR MX-30T Panel is a Real-Time PCR test intended for the qualitative detection of the bacterial and fungal agents and antimicrobial resistance genes. The Sepsis qPCR MX-30T Panel is applied to nucleic acid isolates obtained from whole blood and positive blood culture samples.

MENINGITIS / ENCEPHALITIS



MENINGITIS / ENCEPHALITIS RT-qPCR MX-17T PANEL

Code	16 Targets	Specimens type	Format	Package - tests per kit	
BS-ME-MX17T-25 BS-ME-MX17T-100	Virus: <ul style="list-style-type: none"> ■ Herpes Simplex Virus 1 ■ Herpes Simplex Virus 2 ■ Human Herpesvirus 6 ■ Human Herpesvirus 7 ■ Human Herpesvirus 8 ■ Hu-man Parechovirus ■ Betaherpesvirinae ■ Enterovirus ■ Varicella-Zoster Virus 	Gram- Bacteria: <ul style="list-style-type: none"> ■ Streptococcus pneumoniae ■ Streptococcus agalactiae ■ Listeria Monocytogenes ■ Neisseria meningitidis ■ Haemophilus influenzae ■ Escherichia coli K1 Fungi: <ul style="list-style-type: none"> ■ Cryptococcus gattii/neoformans 	<ul style="list-style-type: none"> ■ Cerebrospinal fluid 	Well strip or Tube	25 / 100

DAYS OF PROCEDURE, DOWN TO AN 1 HOUR

Available in strip and tube formats
 3-17 targets in 45-60 min from sample to result
 Automated reporting in < 1 min

Meningitis/Encephalitis RT-qPCR MX-17 Panel is a Real-Time PCR (RT-qPCR) test intended for the qualitative detection of the viral, bacterial, and fungal agents cause of meningitis and encephalitis.

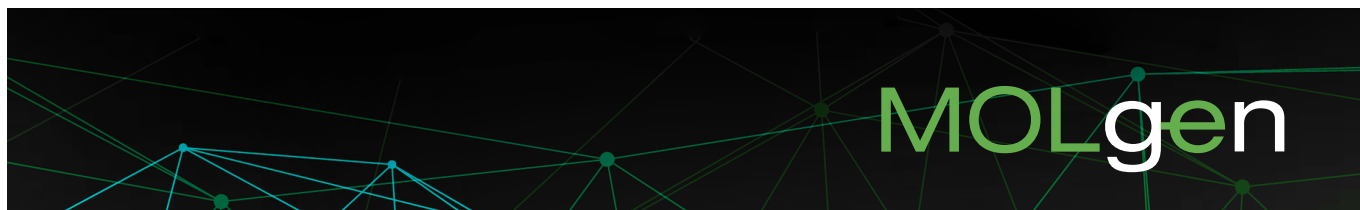
ORTHOPEDIC - BONE & JOINT INFECTIONS



BONE & JOINT qPCR PANEL

Code	19 Targets	Specimens type	Format	Package - tests per kit	
BS-BJ-T-25	Gram+ Bacteria: <ul style="list-style-type: none"> ■ Staphylococcus aureus ■ Staphylococcus lugdunensis ■ Streptococcus spp. ■ Anaerococcus prevotii ■ Anaerococcus vaginalis ■ Clostridium perfringens ■ Enterococcus faecalis ■ Enterococcus faecium ■ Finegoldia magna ■ Parvimonas micra ■ Peptoniphilus spp. 1 Fungi agent: <ul style="list-style-type: none"> ■ Candida spp. 	Gram- Bacteria: <ul style="list-style-type: none"> ■ Bacteroides fragilis ■ Citrobacter spp. ■ Enterobacter cloacae complex ■ Escherichia coli ■ Haemophilus influenzae ■ Kingella kingae ■ Klebsiella aerogenes ■ Klebsiella pneumoniae ■ Morganella morganii ■ Neisseria gonorrhoeae ■ Proteus spp. ■ Pseudomonas aeruginosa ■ Salmonella spp. ■ Serratia marcescens 	<ul style="list-style-type: none"> ■ Synovial fluid ■ Peri-prosthetic fluid ■ Bone tissue samples 	Well strip or Tube	25

Bone & Joint qPCR Panel is a Real-Time PCR (qPCR) test intended for the Gram-positive and Gram-negative bacteria, yeast, commonly associated with joint infections.





GASTROENTERITIS RT-qPCR MX-24T PANEL

Code	24 TARGETS	Specimens type	Format	Package - tests per kit	
BS-GE-MX24T-25 BS-GE-MX24T-100	<p>Gram+ Bacteria agents:</p> <ul style="list-style-type: none"> ■ Clostridium difficile toxin A ■ Clostridium difficile toxin B ■ Clostridium difficile Binary toxin A/B <p>Virus agents:</p> <ul style="list-style-type: none"> ■ Sapovirus (GI/GII/GIV/GV) ■ Adenovirus ■ Astrovirus ■ Norovirus (GI/GII) ■ Rotavirus (A) <p>Parasite agents:</p> <ul style="list-style-type: none"> ■ Giardia lamblia ■ Entamoeba histolytica ■ Cryptosporidium spp. ■ Cyclospora cayetanensis 	<p>Gram- Bacteria agents:</p> <ul style="list-style-type: none"> ■ Plesiomonas shigelloides ■ Salmonella spp. ■ Campylobacter spp. ■ Vibrio parahaemolyticus ■ Vibrio cholerae ■ Vibrio vulnificus ■ Shigella/Enteroinvasive E. coli (EIEC) ■ Enteraggregative E. coli (EAEC) ■ Shiga toxin-producing E. coli (STEC) ■ Enteropathogenic E. coli (EPEC) ■ Enterotoxigenic E. coli (ETEC) ■ Yersinia enterocolitica 	<ul style="list-style-type: none"> ■ Stool sample ■ Rectal swab 	Well strip or Tube	25 / 100

Gastroenteritis RT-qPCR MX-24 Panel is a Real-Time PCR (RT-qPCR) test intended for the qualitative detection of the viral, bacterial, and parasitic agents associated with gastroenteritis.



RESPIRATORY ID-1 KIT

Code	7 Targets	Specimens type	Format	Package - tests per kit
BS-RIDK-1-25 BS-RIDK-1-100	Bacteria: <ul style="list-style-type: none"> Group A Streptococcus 	Virus: <ul style="list-style-type: none"> SARS-CoV-2 Influenza A Influenza B RSV A/B Adenovirus Rhinovirus 	<ul style="list-style-type: none"> Nasopharyngeal & Oropharyngeal swab samples 	Well strip or Tube 25 / 100

Respiratory ID-1 Kit is a Real-Time PCR (RT-qPCR) test intended for the qualitative detection of respiratory viral and bacterial pathogens.

RESPIRATORY ID-1 PANEL

Code	24 Targets	Specimens type	Format	Package - tests per kit
BS-RIDP-1-25	Virus: <ul style="list-style-type: none"> SARS-CoV-2 Influenza A Influenza B Human Coronavirus (HCoVs) 229E - OC43 - NL63 - HKU1 Human Parainfluenza (HPIVs) 1-2-3-4 Metapneumovirus Adenovirus Bocavirus Enterovirus Rhinovirus Respiratory syncytial virus A/B 	Bacteria: <ul style="list-style-type: none"> Group A Streptococcus Streptococcus pneumoniae Legionella pneumophila Mycoplasma pneumoniae Haemophilus influenzae Bordetella pertussis 	<ul style="list-style-type: none"> Nasopharyngeal & Oropharyngeal swab samples 	Well strip or Tube 25

Respiratory ID-1 Panel is a Real-Time PCR (RT-qPCR) test intended for the qualitative detection of the respiratory viral and bacteril pathogens.



MTB qPCR KIT

Code	Target	Specimens type	Format	Package - tests per kit
BS-MTB-T-25	Bacteria:	<ul style="list-style-type: none"> Bronchoalveolar lavage Sputum samples 	Well strip or Tube	25 / 100
BS-MTB-T-100	<ul style="list-style-type: none"> Mycobacterium tuberculosis complex 			

MTB qPCR Kit is a Real-Time PCR (qPCR) test intended for the qualitative detection of Mycobacterium tuberculosis complex (M. tuberculosis, M. bovis, M. africanum, M. microti, M. caprae, M. canetti and vaccine strain BCG).

MTB/NTM qPCR KIT

Code	3 Targets	Specimens type	Format	Package - tests per kit
BS-MTBNTM-T-25	Bacteria:	<ul style="list-style-type: none"> Bronchoalveolar lavage Sputum samples 	Well strip or Tube	25 / 100
BS-MTBNTM-T-100	<ul style="list-style-type: none"> Mycobacterium tuberculosis complex (MTB) Mycobacterium avium complex Mycobacterium spp. 			

MTB/NTM qPCR Kit is a Real-Time PCR (RT-qPCR) test intended for the qualitative detection of Mycobacterium tuberculosis and NTM.

MTB/MDR qPCR PANEL

Code	7 distinct channel for 13 mutations	Specimens type	Format	Package - tests per kit
BS-MTBMDR-T-25	Drug Resistance:	<ul style="list-style-type: none"> Bronchoalveolar lavage Sputum samples 	Well strip or Tube	25 / 100
BS-MTBMDR-T-100	<ul style="list-style-type: none"> Rifampicin-resistance (10 mutations) Isoniazid-resistance (3 mutations) 			

MTB/MDR qPCR Panel is a Real-Time PCR (RT-qPCR) test intended for the qualitative detection of Mycobacterium Drug Resistance.

TB-XDR qPCR PANEL

Code	5 Targets	Specimens type	Format	Package - tests per kit
BS-TBXDR-T-25	Drug Resistance:	<ul style="list-style-type: none"> Bronchoalveolar lavage Sputum samples 	Well strip or Tube	25 / 100
BS-TBXDR-T-100	<ul style="list-style-type: none"> Ethionamide Fluoroquinolones Amikacin Kanamycin Capreomycin 			

TB-XDR qPCR Panel is a Real-Time PCR (RT-qPCR) test intended for the qualitative detection of Mycobacterium Drug Resistance.



ANTIBIOTIC RESISTANCE qPCR PANEL

Code	25 Targets	Specimens type	Format	Package - tests per kit	
BS-ABR-T-25 BS-ABR-T-100	<p>Beta-lactams agents:</p> <ul style="list-style-type: none"> ▪ OXA ▪ KPC ▪ NDM ▪ IMP ▪ VIM ▪ ampC ▪ GES ▪ SHV-1 ▪ TEM ▪ CTX-M <p>Methicillin agents:</p> <ul style="list-style-type: none"> ▪ mecA ▪ mecC <p>Vancomycin agents:</p> <ul style="list-style-type: none"> ▪ vanA ▪ vanB 	<p>Aminoglycosides agents:</p> <ul style="list-style-type: none"> ▪ aadA ▪ aadB ▪ APH(3')-Ia ▪ AAC(3)-IV ▪ armA <p>Fluoroquinolones agents:</p> <ul style="list-style-type: none"> ▪ parC ▪ gyrA ▪ Qnr <p>Colistin agent:</p> <ul style="list-style-type: none"> ▪ mcr <p>Sulfonamide agent:</p> <ul style="list-style-type: none"> ▪ sul <p>Trimethoprim agent:</p> <ul style="list-style-type: none"> ▪ dfrA 	<ul style="list-style-type: none"> ▪ Cerebrospinal Fluid ▪ Synovial fluid ▪ Peri-prosthetic fluid ▪ BAL samples ▪ Bone tissue ▪ Whole blood ▪ Positive blood culture ▪ Sputum 	Well strip or Tube	25 / 100

Antibiotic Resistance qPCR Panel is a Real-Time PCR (RT-qPCR) test intended for the qualitative detection of antibiotic resistance genes.



CARBAPENEM RESISTANCE qPCR KIT

Code	7 Target	Specimens type	Format	Package - tests per kit
BS-AR-CR-25 BS-AR-CR-100	Carbapenem: <ul style="list-style-type: none"> ■ KPC ■ NDM ■ VIM ■ IMP ■ OXA-51 ■ OXA-23 ■ OXA-48 	<ul style="list-style-type: none"> ■ Cerebrospinal Fluid ■ BAL samples ■ Whole blood ■ Positive blood culture ■ Urine samples ■ Rectal Swab samples 	Well strip or Tube	25 / 100

Carbapenem Resistance qPCR Kit is a Real-Time PCR (RT-qPCR) test intended for the qualitative detection of Carbapenamase resistance genes.

PLASMID-MEDIATED COLISTIN RESISTANCE qPCR KIT

Code	8 Targets	Specimens type	Format	Package - tests per kit
BS-AR-CoR-25 BS-AR-CoR-100	<ul style="list-style-type: none"> ■ mcr 1-8 	<ul style="list-style-type: none"> ■ Whole blood ■ Positive blood culture ■ Urine samples ■ Vagine and Rectal Swab ■ Bronchoalveolar lavage (BAL) ■ Nasopharyngeal aspirate. 	Well strip or Tube	25 / 100

Collistin Resistance qPCR Kit is a Real-Time PCR (RT-qPCR) test intended for the qualitative detection of Collistin resistance genes.

VANCOMYCIN RESISTANCE qPCR KIT

Code	2 Targets	Specimens type	Format	Package - tests per kit
BS-AR-VR-25 BS-AR-VR-100	Vancomycin: <ul style="list-style-type: none"> ■ VanA ■ VanB 	Cerebrospinal Fluid, BAL samples, Whole blood, Positive blood culture, Urine samples, Rectal Swab, Synovial fluid and pe-ri-prosthetic fluid, Bone tissue	Well strip or Tube	25 / 100

Vancomycin Resistance qPCR Kit is a Real-Time PCR (RT-qPCR) test intended for the qualitative detection of Vancomycin resistance genes.



PLASMODIUM qPCR PANEL

Code	5 Targets	Specimens type	Format	Package - tests per kit
BS-PM-T-25 BS-PM-T-100	Parasite: <ul style="list-style-type: none"> ■ Plasmodium falciparum ■ Plasmodium malariae ■ Plasmodium ovale ■ Plasmodium vivax ■ Plasmodium knowlesi 	<ul style="list-style-type: none"> ■ Whole blood ■ Positive blood culture 	Well strip or Tube	25 / 100

Plasmodium qPCR Panel is a Real-Time PCR (RT-qPCR) test intended for the qualitative detection of the Plasmodium.

TROPICAL FEVER RT-qPCR PANEL

Code	21 Targets	Specimens type	Format	Package - tests per kit	
BS-TF-T-25 BS-TF-T-100	Virus: <ul style="list-style-type: none"> ■ Chikungunya virus ■ Dang virus ■ Hantavirus ■ Japan encephalitis virus ■ Mayaro virus ■ Crimean-Congo Hemorrhagic Fever virus. (CCHFV) ■ Ebola virus ■ Rift Valley virus ■ West Nile Virus (WNV) ■ Zika virus (ZIKV) ■ Yellow fever virus 	Bacteria: <ul style="list-style-type: none"> ■ Burkholderia pseudomallei ■ Coxiella burnetii ■ Leptospira spp. ■ Rickettsia spp. Parasite: <ul style="list-style-type: none"> ■ Trypanosoma cruzi ■ Leishmania spp. 	<ul style="list-style-type: none"> ■ Whole blood ■ Serum ■ Plasma ■ Urine samples 	Well strip or Tube	25 / 100

Tropical Fever RT-qPCR Panel is a Real-Time PCR (RT-qPCR) test intended for the qualitative detection of the viral and bacteria Tropical Fever.

SEXUALLY TRANSMITTED DISEASES



SEXUALLY TRANSMITTED IN-FECTIONS RT-qPCR PANEL

Code	11 Targets	Specimens type	Format	Package - tests per kit	
BS-STI-T-25 BS-STI-T-100	Gram+ Bacteria: <ul style="list-style-type: none"> ■ Streptococcus agalactiae ■ Gardnerella vaginalis ■ Neisseria gonorrhoeae ■ Treponema pallidum ■ Trichomonas vaginalis ■ Ureaplasma parvum/urealyticum 	Gram- Bacteria: <ul style="list-style-type: none"> ■ Mycoplasma genitalium ■ Mycoplasma hominis ■ Haemophilus ducreyi Virus: <ul style="list-style-type: none"> ■ Herpes Simplex Virus-1 ■ Herpes Simplex Virus-2 	<ul style="list-style-type: none"> ■ Cervical ■ Vaginal and urine samples 	Well strip or Tube	25 / 100

Sexually Transmitted Infection RT-qPCR Panel is a Real-Time PCR (RT-qPCR) test intended for the qualitative detection of STI pathogens.

SEXUALLY TRANSMITTED IN-FECTIONS RT-qPCR PANEL

(RUO*)

Code	12 Target	Specimens type	Format	Package - tests per kit	
BS-STI-T-25R BS-STI-T-100R	Gram+ Bacteria: <ul style="list-style-type: none"> ■ Streptococcus agalactiae ■ Gardnerella vaginalis ■ Neisseria gonorrhoeae ■ Treponema pallidum ■ Trichomonas vaginalis ■ Ureaplasma parvum/urealyticum 	Gram- Bacteria: <ul style="list-style-type: none"> ■ Mycoplasma genitalium ■ Mycoplasma hominis ■ Haemophilus ducreyi ■ Chlamydia trachomatis Virus: <ul style="list-style-type: none"> ■ Herpes Simplex Virus-1 ■ Herpes Simplex Virus-2 	<ul style="list-style-type: none"> ■ Cervical ■ Vaginal and urine samples 	Well strip or Tube	25 / 100

Sexually Transmitted Infections RT-qPCR Panel is Real-Time PCR test intended for the qualitative detection of STI pathogens.

HUMAN PAPILLOMAVIRUS - HPV HR / LR SCREEN & GENOTYPING



HUMAN PAPILLOMAVIRUS qPCR KIT (16-18 & SCREEN 12 HR)

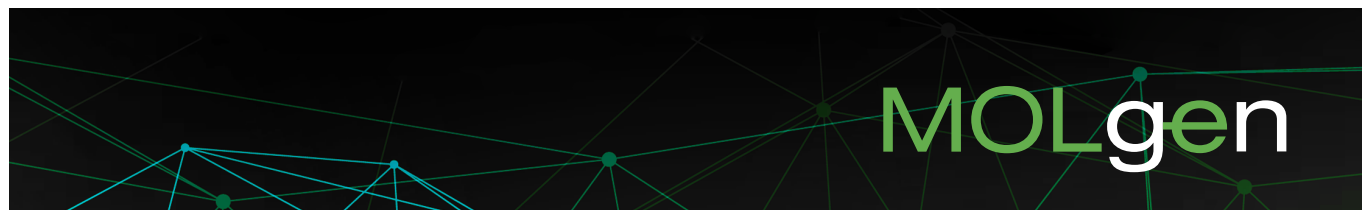
Code	3 Distinct Targets and High Risk Human Papillomavirus	Specimens type	Format	Package - tests per kit
BS-HPV-25 BS-HPV-100	High Risk: <ul style="list-style-type: none"> ■ 16* ■ 18* ■ 31/33/35/39/45/51/52/56/58/59/66/68 	<ul style="list-style-type: none"> ■ Cervical ■ Vaginal & penil ■ Swab samples 	Well strip or Tube	25 / 100

Human Papillomavirus qPCR Kit is a Real-Time PCR (RT-qPCR) test intended for the qualitative detection and genotyping (*) of High Risk Human Papillomavirus.

HUMAN PAPILLOMAVIRUS HIGH-RISK/LOW MEDIUM RISK GENOTYPING qPCR PANEL

Code	28 Distinct Targets	Specimens type	Format	Package - tests per kit
BS-GHPV-T-25 BS-GHPV-T-100	High Risk: <ul style="list-style-type: none"> ■ 16 ■ 18 ■ 31/33/35/39/45/51/52/56/58/59/66/68 Low Risk: <ul style="list-style-type: none"> ■ 6 ■ 11 ■ 26 ■ 40 ■ 42 ■ 43 ■ 44 ■ 53 ■ 54 ■ 61 ■ 69 ■ 70 ■ 73 ■ 82 	<ul style="list-style-type: none"> ■ Cervical ■ Vaginal & penil ■ Swab samples 	Well strip or Tube	25 / 100

Human Papillomavirus High-Risk/Low Medium Risk qPCR T Panel is a Real-Time PCR (qPCR) test intended for the genotyping of 28 High Risk/Low medium risk Human Papillomavirus.





HUMAN PAPILLOMAVIRUS 6-11-16-18-HR qPCR PANEL (SCREEN)

Code	3 Distinct Targets, High Risk and Low Risk Human Papillomavirus	Specimens type	Format	Package - tests per kit	
BS-4THPV-25 BS-4THPV-100	High Risk: <ul style="list-style-type: none"> ■ 16* ■ 18* ■ 45* ■ High Risk Human Papillomavirus 	Low / Medium Risk: <ul style="list-style-type: none"> ■ Low Risk Human Papillomavirus 	<ul style="list-style-type: none"> ■ Cervical ■ Vaginal & penil ■ Swab samples 	Well strip or Tube	25 / 100

Human Papillomavirus 6-11-18-HR qPCR Panel is a Real-Time PCR (qPCR) test intended for the qualitative detection of 28 High Risk/Low medium risk Human Papillomavirus with genotyping of HR HPV 16*,18*,45*.

HUMAN PAPILLOMAVIRUS HIGH-RISK GEMOTYPING qPCR PANEL

Code	14 Targets	Specimens type	Format	Package - tests per kit
BS-HRHPV-T-25 BS-HRHPV-T-100	High Risk: <ul style="list-style-type: none"> ■ HPV 16, 18, 31, 33, 35, 39, 45, 51,52, 56, 58, 59, 66, 68 	<ul style="list-style-type: none"> ■ Cervical ■ Vaginal & penil ■ Swab samples 	Well strip or Tube	25 / 100

Human Papillomavirus High-Risk qPCR-T Panel is a Real-Time PCR (qPCR) test intended for the genotyping of 14 High Risk Human Papillomavirus.

HUMAN PAPILLOMAVIRUS LOW-MEDIUM RISK GENOTYPING qPCR PANEL

Code	14 Targets	Specimens type	Format	Package - tests per kit
BS-LMHPV-T-25 BS-LMHPV-T-100	Low / Medium Risk: <ul style="list-style-type: none"> ■ HPV 6, 11, 26, 40, 42, 43, 44, 53, 54, 61, 69, 70, 73, 82 	<ul style="list-style-type: none"> ■ Cervical ■ Vaginal & penil ■ Swab samples 	Well strip or Tube	25 / 100

Human Papillomavirus Low-Medium Risk qPCR Panel is a Real-Time PCR (qPCR) test intended for the genotyping of 14 Low / Medium Risk of Human Papillomavirus.

URINARY TRACT INFECTIONS (UTI)



URINARY TRACT INFECTIONS qPCR PANEL - SCREENING

Code	29 TARGETS	Specimens type	Format	Package - tests per kit	
BS-UTI-T-25 BS-UTI-T-100	<p>Gram+ Bacteria agents:</p> <ul style="list-style-type: none"> ■ Staphylococcus aureus ■ Staphylococcus saprophyticus ■ Aerococcus urinae ■ Enterococcus faecium ■ Streptococcus agalactiae ■ Enterococcus faecalis ■ Corynebacterium urealyticum <p>Fungi agents:</p> <ul style="list-style-type: none"> ■ Candida parapsilosis ■ Candida albicans ■ Candida glabrata ■ Candida tropicalis ■ Candida krusei ■ Candida auris 	<p>Gram- Bacteria agents:</p> <ul style="list-style-type: none"> ■ Acinetobacter baumannii ■ Klebsiella pneumoniae ■ Morganella morganii ■ Pseudomonas aeruginosa ■ Providencia stuartii ■ Ureaplasma urealyticum ■ Ureaplasma parvum ■ Proteus vulgaris ■ Proteus mirabilis ■ Escherichia coli ■ Serratia marcescens ■ Klebsiella oxytoca ■ Klebsiella aerogenes ■ Enterobacter cloacae ■ Citrobacter freundii ■ Treponema pallidum 	<ul style="list-style-type: none"> ■ Urine samples 	Well strip or Tube	25 / 100

Urinary Tract Infections qPCR Panel is a one-step Real-Time PCR (qPCR) test intended for the presumptive qualitative detection of the bacterial agents and antimicrobial resistance genes associated with Urinary Tract Infections.

CANDIDIASIS



CANDIDA qPCR PANEL

Code	6 TARGETS	Specimens type	Format	Package - tests per kit
BS-CD-T-25 BS-CD-T-100	<p>Fungi agents:</p> <ul style="list-style-type: none"> ■ Candida parapsilosis ■ Candida krusei ■ Candida glabrata ■ Candida albicans ■ Candida tropicalis ■ Candida auris 	<ul style="list-style-type: none"> ■ Whole blood ■ Positive blood culture ■ Urine 	Well strip or Tube	25/100

Candida qPCR Panel is a Real-Time PCR (qPCR) test intended for the qualitative detection of fungal agents associated with Candidiasis.

NUCLEIC ACID ISOLATION KIT

Code	Kit	Specimens type	Format	Package - tests per kit
ME1BSNAIS010WB	Molgen Nucleic Acid Isolation kit	<ul style="list-style-type: none"> ■ Whole blood ■ Culture ■ Serum ■ Plasma ■ Bronchoalveolar lavage ■ Nasopharyngeal aspirate 	<ul style="list-style-type: none"> ■ Saliva ■ Gargle and sputum samples ■ Urine samples ■ Stool and tissue samples ■ Food samples 	Cartridges 40
ME188830MDX	Molgen Universal Extraction Kit	<ul style="list-style-type: none"> ■ Blood serum (plasma) ■ Leukocyte blood fraction ■ Biopsy material ■ Nasopharyngeal / Oropharyngeal swab ■ Oral / saliva swab ■ Saliva ■ Bronchoalveolar lavage ■ Liquor 	<ul style="list-style-type: none"> ■ Urine ■ Faeces ■ Scrapings of epithelial cells ■ Cerebrospinal fluid ■ Nasopharyngeal aspirate ■ Gargle and sputum samples ■ Tck suspension samples ■ Water samples 	Cartridges 48

The Nucleic Acid Isolation Kit is a nucleic acid extraction system based on magnetic bead purification.

It is used for nucleic acid extraction and purification from all sample types It is suitable for in-vitro diagnosis from clinical samples.

These kits are intended for use with full automated MDXlab instrument available from Adaltis S.r.l.Extraction systems are installed with the extraction protocols preloaded.

5MIN NA TUBE

Code	Kit	Specimens type	Format	Package - tests per kit
BS-NA-516-100	5min NA Tube	<ul style="list-style-type: none"> ■ Nasopharyngeal and Oropharyngeal swab ■ Oral / Saliva swab ■ Bronchoalveolar lavage 	<ul style="list-style-type: none"> ■ Nasopharyngeal aspirate ■ Saliva ■ Gargle and sputum samples 	NA Tube 100

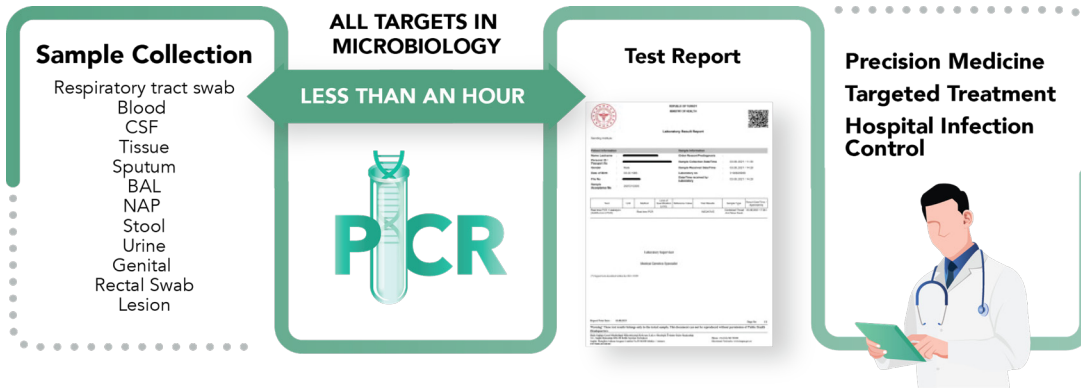
The 5min NA Tube is a 20x concentrated nucleic acid extraction and preservation liquid for nasal swab, nasopharyngeal swab, oropharyngeal swab, oral/saliva swab, bronchoalveolar lavage, nasopharyngeal aspirate, saliva, gargle, and sputum samples. In 5 minutes, the 5min NA Tube allows for obtaining nucleic acids that are ready for qPCR.

vNAT® TRANSFER TUBE

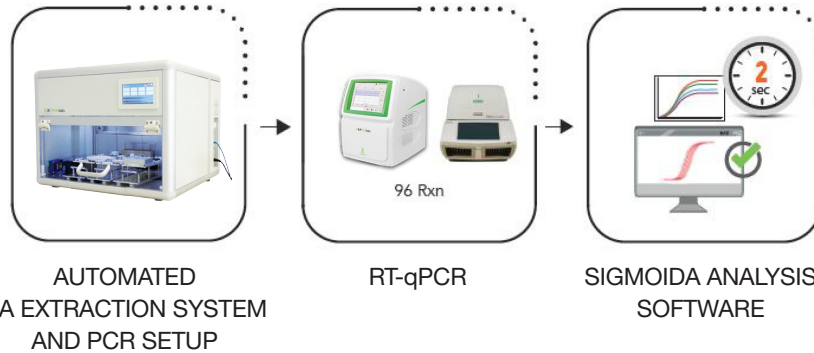
Code	Kit	Specimens type	Format	Package - tests per kit
BS-NA-513m-100	vNAT® Transfer Tube	<ul style="list-style-type: none"> ■ Nasopharyngeal ■ Oropharyngeal ■ Throat ■ Recta ■ Vaginal 	<ul style="list-style-type: none"> ■ Cervical ■ Urethral ■ Urogenital ■ Endocervical ■ Penile and conjunctival swab samples 	Transfer Tube 100

The vNAT® Transfer Tube allows from sample to RT-qPCR in a minute.

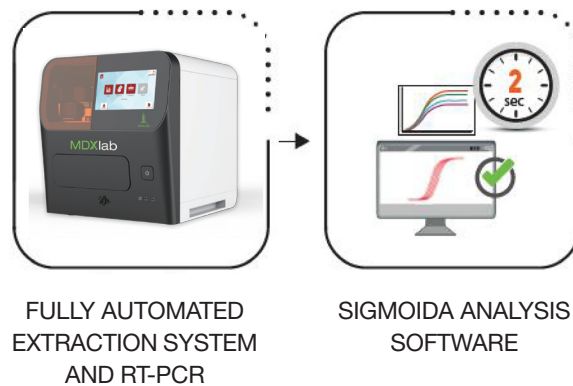
The vNAT Transfer Tube contains 2 ml of vNAT reagent, which lyses cells, releases nucleic acids, and preserves them. The vNAT reagent also inactivates viral and bacterial pathogens within 1 minute of contact with the clinical specimen. When clinical specimens (*) transferred into the vNAT Transfer Tube, the liquid inside the tube can be directly used in Real-Time PCR (qPCR) reactions without the need for nucleic acid extraction.



**FLEXIBLE
qPCR FORMAT
FOR A VARIETY
OF APPLICATIONS**



**MOLgen
SAMPLE-TO-ANSWER
SOLUTIONS**



For more information

WWW.ADALTIS.NET

Customer Care Center:
e-mail: info@adaltis.net

Marketing and sales
e-mail: sales@adaltis.net

MDx Technical Assistance
e-mail: mdx@adaltis.net

MDx Application Assistance
e-mail: mdx.service@adaltis.net

Legal Registered Office
Via Durini, 27
20122 Milano, Italy

Tel: + 39 0774 5791
Fax: + 39 0774 353085

Adaltis S.r.l. Headquarter
Production and
Development Plant

Via Luigi Einaudi 7
Guidonia di Montecelio
00012 Rome, Italy

ADALTIS is certified in compliance with ISO9001 and ISO 13485.
Our products are CE-IVD.